

LD153

5W Exterior LED Buried Uplighter

IP67  

Data sheet - page 1

The LD153 is a very powerful luminaire for its size and can be used externally and internally. It uses the same LED and lenses as the LD150. The uplighter has walk over 6mm thick flush glass with a machine finish 316 stainless steel bezel.

The new LD153 can be specified with a simple sleeve (requiring a recess depth of only 85mm), straight sided housing or concrete housing (with optional integral driver).

Lens options are a 10° spot for lighting columns and arches or a 15°x30° spreader lens which is ideal for wall washing. The RGBW uses a different optic which mixes the colours into a uniform beam.

Both come with a glare shield as standard, which has been developed to minimise the view of the intense light source without affecting the wash of light on the wall/column.

The LD153 uses a water tight 'O' ring compression system to secure the fitting in the sleeve and the 2 housing options. It must therefore be used with one of these to ensure the IP67 rating.

Specification

Applications	Exterior column uplighting, wall wash
Lamp Source	Cree MCE 4 die LED
Power	5W (nominal)
Lumen Output	320 lumens
Efficacy	59lm/w
CRI	85 (2900K), 80 (4500k)
Current	350mA
Forward voltage (Vf)	15.6V Max
LED Lifetime (to 70% lumen maintenance)	50,000hrs
Materials	Black anodised aluminium body, machine finish 316 stainless steel bezel (other options available)
Glass	6mm thick borosilicate
Glare shield	Fitted as standard
Wiring	Comes pre-wired with 100mm lead
Max Ambient Temp	50°C
IP rating	IP67



Design: Brilliant Lighting Project: Private Residence Product: LD153/10



LD153

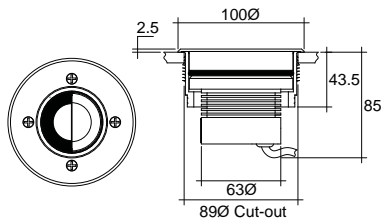
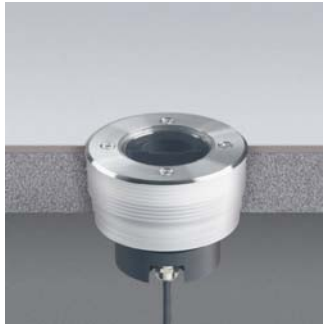
5W Exterior LED Buried Uplighter

IP67  

Data sheet - page 2

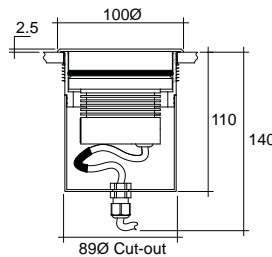
Fixing Options - The LD153 must be used with one of these fixing options.

/483S First fix sleeve is polypropelene, with a finned top to fix into various surfaces.

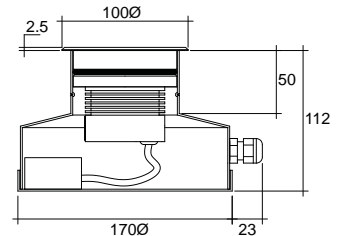


(Dimensions in mm)

/483SH Straight sided housing with a finned fixing system. The sealed housing allows connection to be made inside.



/483N Concrete housing
/ID Optional integral non dimming driver (single colour only)



Lens Options

/10 - 10deg spot

/85 - 15x30deg spreader

RGBW - 26deg colour mix



Note: The centre of the LD153 is positioned 125mm from the wall in these photos. The wall is 2.5m high.

Photometrics

10deg spot - 2900K

Distance (m)	Beam diameter (m)	Illuminance (lx)
0.5	0.15	4200
1.0	0.27	1020
1.5	0.40	493
2.0	0.54	286
2.5	0.65	190

Cone diameter (m)

15x30deg spreader - 2900K

Distance (m)	Beam diameter (m)	Illuminance (lx)
0.5	0.32	1420
1.0	0.60	415
1.5	0.90	192
2.0	1.18	110
2.5	1.48	71

Cone diameter (m)

Product code	LED colour	Lens angle	Finish	Sleeve/Housing
LD153				

Example: LD153 / LWW / 10 / Stainless steel / 483SH

LED colour options	Suffix
Warm white (2900K)	/LWW
White (4500K)	/LW
RGB and White	/RGBW

Lens options	Suffix
10 degree spot	/10
15x30 degree spreader	/85
RGBW LED comes with a 26deg colour mix lens	

Bezel finish options
Stainless steel 316 (standard)
Polished stainless steel
Powder coated white / black
Antique bronze (solid bronze - interior use only)

Fixing options	Suffix
First fix sleeve	/483S
Straight sided housing	/483SH
Concrete housing	/483N
with integral driver	/ID

To be used with 350mA remote LED Drivers

To run 1 or 2 fittings (1 per circuit) use a TXDL20 (0-10V dimmable)
To run 1 - 3 fittings in series use a TXDL18CC-350D (1-10V dimmable)
Details of these can be found on page 82-83 in the Edition 10 catalogue
Talk to LGX for RGBW control.