

LD197 - F1 & LD197A - F1

LED Downlight



Install sheet - Page 1

SPECIFICATION

LED recessed luminaires are class III for Safety Extra Low Voltage **DC** supply. The product should only be used with a supplied or LightGraphix approved **350mA, 500mA or 700mA** constant current driver.

Suitable for mounting on normally flammable surfaces.

Lamp: **F1 LED Engine.**

This fitting is **IP67** rated.

Lumen Maintenance: L90B5 at 90,000hrs.

LD197-F1 & LD197A-F1	
Product & LED Output Code	Power Output
LD197-F1, LD197A-F1 - 350	350mA 3.5W
LD197-F1, LD197A-F1 - 500	500mA 5W
LD197-F1, LD197A-F1 - 700	700mA 7W

INSTALLATION

1. Wire luminaire to specified driver.

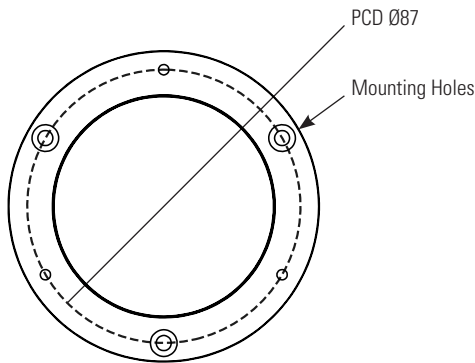
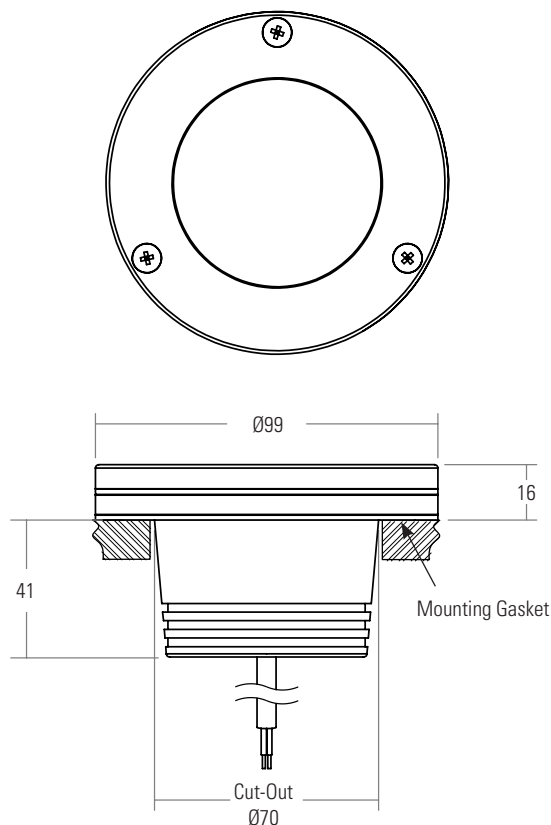
NOTE: Connections in wet environments. Make IP68 connection to stop water travelling up the cables into the fittings! Refer to IP connection sheet for further details.

2. Bore clearance holes to suit the dimensions shown below.

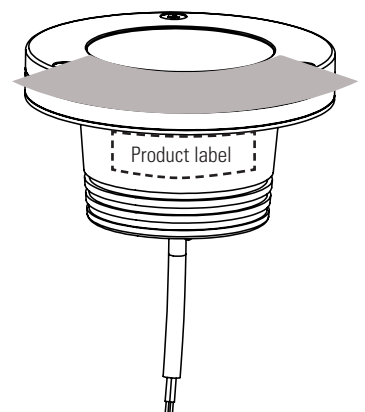
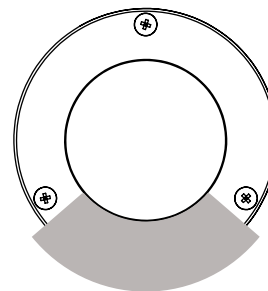
3. Offer the body (with the mounting gasket on the underside of the body) into the hole and secure by means of three stainless steel countersunk screws ensuring that the screw heads are not proud of the surface of the flange. If installing the asymmetric fitting, the beam direction is located by the product label sticker.

4. Replace the bezel ensuring that the mating surfaces and seal are completely free from dirt, grit and moisture. Ensure the Black gasket is put between the body and the bezel.

5. Tighten bezel screws gradually in turn to an ultimate torque of 0.5 Nm.



LD197A-F1
Beam Orientation



SEE CONSTANT CURRENT WIRING SHEET FOR IN SERIES WIRING DIAGRAM

WIRING

Do not power up until fitting is wired correctly! Constant current LEDs must be wired in series, polarity is critical. Please refer to specified driver sheet for details on the minimum and maximum number of LEDs per circuit.

IMPORTANT

Make sure that all cables and connections are securely connected before switching on the power. Failing to do this can lead to failure of the LEDs and/or the driver. If the LEDs do not work upon power up, turn off the power source immediately and check the polarity of the wiring. Any attempt made to open up and/or modify the luminaire will invalidate the manufacturers warranty. This is inclusive of but not limited to removal of the LightGraphix product label or removal of any parts from the main body of the product including bezels, electrical components and factory fitted fixing methods (unless otherwise stated in these instructions).

CORE COLOUR & POLARITY		
Colour of Cable	Red	Black
Materials	+	-

MAINTENANCE

Clean with soft damp cloth.
LED: Please contact LightGraphix.