

LD83-C1

3 Cluster Surface Mounted Adjustable Spotlight



Install sheet - Page 1

SPECIFICATION

LED recessed luminaires are class III for Safety Extra Low Voltage **DC** supply. The product should only be used with a supplied or LightGraphix approved **350mA** and **500mA** constant current driver.

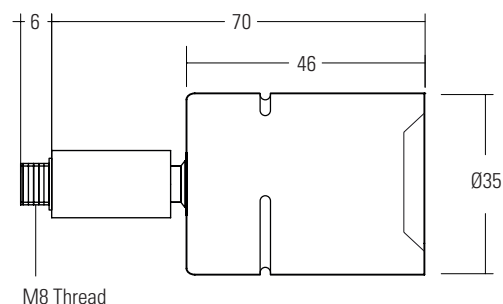
Suitable for mounting on normally flammable surfaces.

Lamp: **C1 LED Engine.**

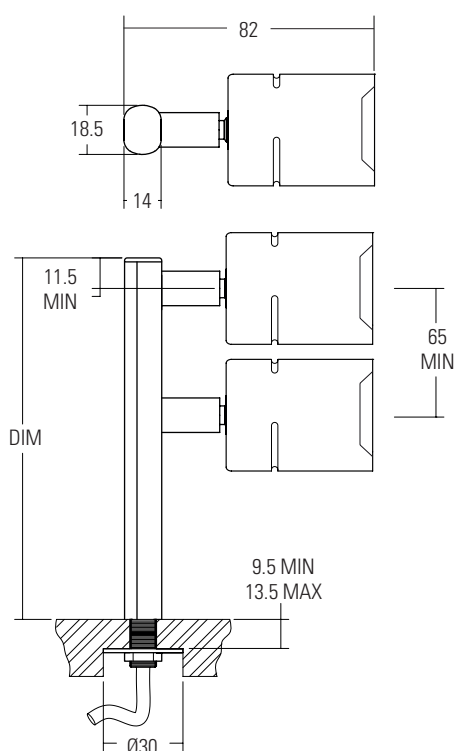
This fitting is **IP40** rated.

Lumen Maintenance: L90B5 at 90,000hrs.

LD83 - C1	
Product & LED Output Code	Power Output
LD83-C1 - 350	350mA 1.2W
LD83-C1 - 500	500mA 1.7W



/M1 Method 1



INSTALLATION

1. Create Ø8.5mm hole or M8x1 thread in to mounting surface.
2. Feed wires through hole taking care not to damage them.
3. Wire the luminaire to a specified driver.
4. Angle head to desired position.

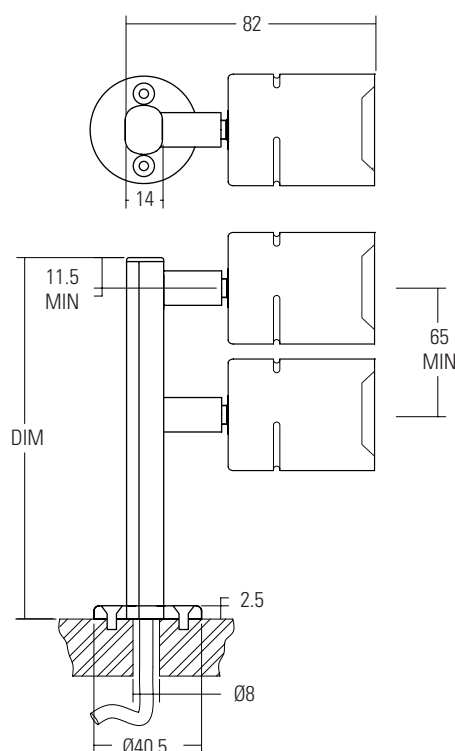
/M1

1. Cut out Ø10mm hole in mounting surface in the correct location.
 2. Undo and remove the nut and washer.
 3. Feed power cable through the hole and slide in the fixing spigots.
 4. Feed cables through the nut and washer and tighten up on the spigot.
- NOTE: Do not over tighten the nut!
5. Wire the luminaire to a specified driver.
 6. Angle head/s to desired position.

/M2

1. Drill 8mm hole for cables in mounting surface and feed wires through.
2. Fix fitting in correct location with 2x No.6 Screws.
3. Wire the luminaire to a specified driver.
4. Angle head/s to desired position.

/M2 Method 2



LD83-C1

3 Cluster Surface Mounted Adjustable Spotlight

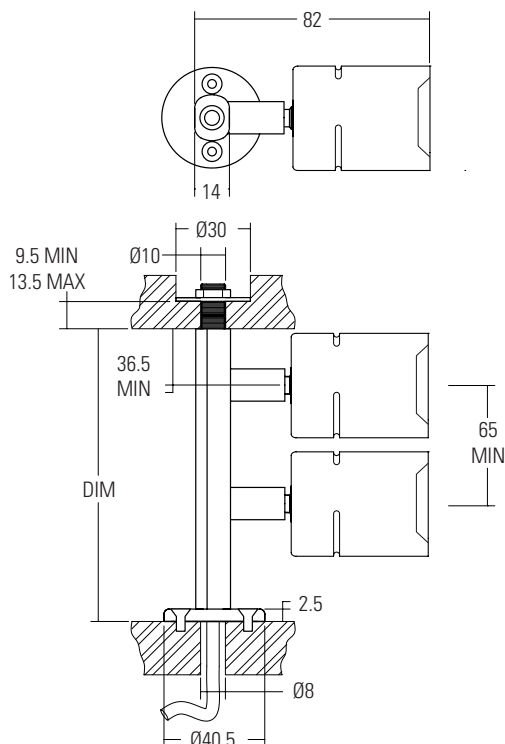


Install sheet - Page 2

SPECIFICATION

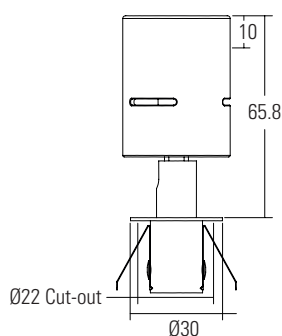
/M3

Method 3



/PL-1

Fixing Plate



INSTALLATION

/M3

1. Undo and remove the nut and washer.
2. Fix top spigot into hole and tighten the nut and washer.
- NOTE: Do not over tighten the nut!
3. Fix the base fitting in correct location with 2x No.6 Screws.
4. Wire the luminaire to a specified driver.
5. Angle head/s to desired position.

/PL-1

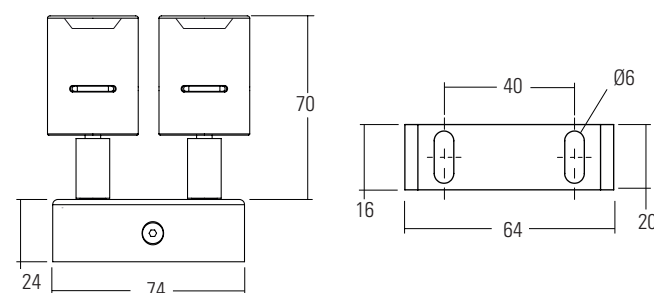
1. Cut out a Ø22mm hole in the mounting surface.
2. Wire the luminaire to a specified driver.
3. Compress the spring clips and push luminaire into mounting surface.
4. Angle head to desired position.

/SMB

1. Fix /SMB Bracket to mounting surface.
2. Wire the luminaire to a specified driver.
3. Replace the LED and /SMB51 to the bracket using the provided screws.
4. Make desired adjustments to the fitting.

/SMB

SMB Bracket



LD83-C1

3 Cluster Surface Mounted Adjustable Spotlight

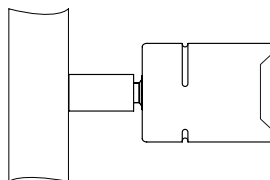
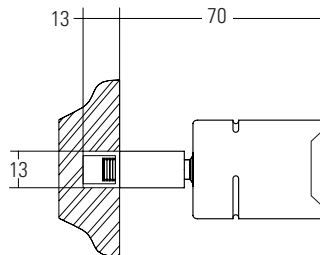


Install sheet - Page 3

SPECIFICATION

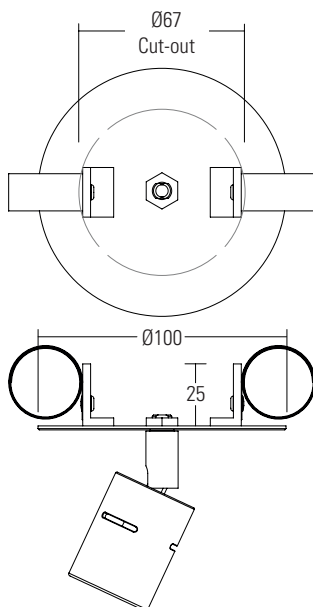
/E1313

Aluminium 'U' channel



/CP-1

Single Ceiling Plate



INSTALLATION

/E313

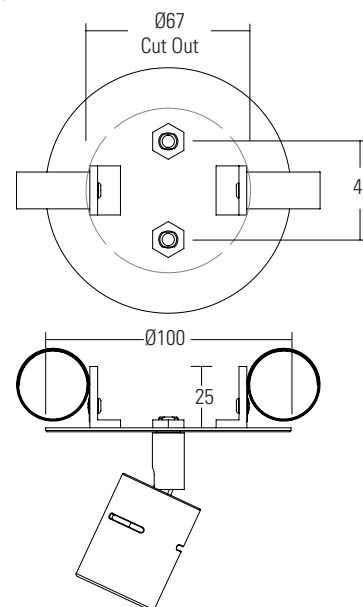
1. Create a groove slightly larger than 13mm in the required location.
2. Wire the luminaire to a specified driver.
3. Either bond or screw the channel into the groove created.
4. Angle head to desired position.

/CP-1, /CP-2

1. Bore clearance hole to shown specified dimension.
2. Wire the luminaire to a specified driver.
3. Pull up on the constant force springs and insert into the cut-out, push the fitting into the ceiling until flush with mounting surface.
4. Angle head to desired position.

/CP-2

Double Ceiling Plate



SEE CONSTANT CURRENT WIRING SHEET FOR IN SERIES WIRING DIAGRAM

WIRING

Do not power up until fitting is wired correctly! Constant current LEDs must be wired in series, polarity is critical. Please refer to specified driver sheet for details on the minimum and maximum number of LEDs per circuit.

IMPORTANT

Make sure that all cables and connections are securely connected before switching on the power. Failing to do this can lead to failure of the LEDs and/or the driver. If the LEDs do not work upon power up, turn off the power source immediately and check the polarity of the wiring. Any attempt made to open up and/or modify the luminaire will invalidate the manufacturers warranty. This is inclusive of but not limited to removal of the LightGraphix product label or removal of any parts from the main body of the product including bezels, electrical components and factory fitted fixing methods (unless otherwise stated in these instructions).

CORE COLOUR & POLARITY		
Colour of Cable	Red	Black
Materials	+	-

MAINTENANCE

Clean with soft damp cloth.
LED: Please contact LightGraphix.