

## LD170

### HIGH POWER LED INTERIOR/EXTERIOR WALL LIGHT



The LD170 is a powerful but compact, recessed wall light designed to produce a low glare uniform floor wash for interior and exterior applications. LD170 is ideal for the illumination of broad steps and pathways with its wide oval beam, integral glare baffle and 20° kick lens which focuses the beam down onto the lit surface. Available LED engines include E2 and F1 which offer colour temperatures between 2200K-5000K, with optional accessories and bezel finishes to choose from. The bezel aesthetic is minimal featuring black trim glass and no visible fixings. This is a very tough, high quality fitting, machined from high grade materials, ensuring excellent thermal and light output performance.

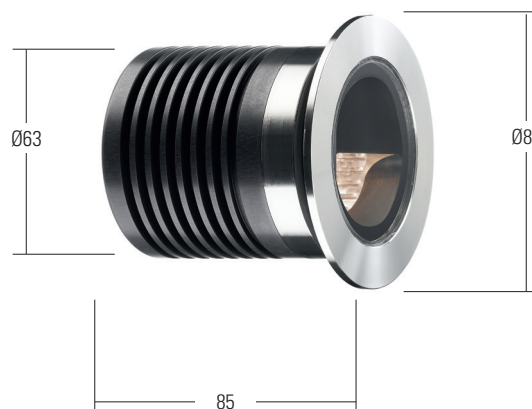
## KEY FEATURES

- > E2 engine option, featuring the CREE LED with up to 203 lumens, 2-step binning and reverse polarity protection
- > F1 COB, Tunable White, RGBW, 2nd channel LEDs also available
- > Straight cut edged bezel available in 316 Stainless Steel, Passivated, Polished, Bronze and paint finishes
- > Integral glare baffle which minimises the light above the horizontal
- > 20° angled kick lens focuses an oval beam down on to the lit surface
- > Toughened glass with Black ceramic trim
- > Fitting rated IK08
- > Single light source and optic produces a very consistent beam with no multiple shadows
- > LED and lens recessed in a matt black anodised body for reduced glare
- > Hidden fixing with first fix sleeve with O-rings
- > Switched, 0-10V, Casambi, DMX, DALI or Mains dimmable drivers available




## DIMENSIONS

*Dimensions in mm*

For full dimensions and for accessory dimensions please go to page 4.



## SPECIFICATION

Engine	 E2		 F1	
Beam angles	/0B		/0B	
LED manufacturer	CREE		CREE	
Colour temperature*	2700K / 3000K / 4000K / 5000K		2200K	
Current	350mA	500mA	350mA	500mA
LED power (Max)	4.2W (5W**)	6W (7W**)	3.2W (3.5W**)	4.5W (5W**)
Delivered lumens (L <sub>100</sub> )***	152	203	76	114
CRI (Min)	85		90	
Forward voltage (V <sub>100</sub> )	14V		9V	
Colour consistency	2 SCDM		3 SCDM	
Peak intensity	831 cd		505 cd	
LED Lumens	873		623	
LOR	0.23		0.18	
TM30	RF84	RG99	RF90	RG102
LED lifetime	L90B5 at 90,000hrs			
Applications				

These values are based around a LD170-E2-500-LW30 & LD170-F1-500-LW22

\*see lumen variance table to the right

\*\*indicates the nominal power for the LED run at that particular current and includes losses associated with using an 85% efficient driver

\*\*\*lumen output indicated is without the glare shield. Allow 30% less with the /GS glare shield.

Lumen variance by CCT	
2700K	+/- 0%
4000K	+7%
5000K	+16%

## MECHANICAL

Ambient temperature	-20° to 55° (350mA) or -20° to 45° (500mA)
Glass	6mm thick toughened glass with black ceramic screen print
Materials	Stainless steel bezel, anodised aluminium body
Weight of product	0.52kg
IP rating	IP67
IK rating	IK08
Wiring	Constant current wiring (pre-wired with 2 core cables at a length of 250mm)



AVAILABLE FINISHES

Please refer to our finishes guide for full details



316 STAINLESS STEEL

- > Marine grade 316 Steel
- > Standard machined finish
- > Extremely durable
- > Passivation recommended for marine environments to prevent corrosion and build up of brown stains caused by oxidation
- > Interior & exterior use

POLISHED STAINLESS STEEL

- > Marine Grade 316 Steel
- > Mirror like finish
- > Extremely durable
- > Can also be passivated to extensively prolong resistance to corrosion and brown stains caused by oxidation in marine environments
- > Interior & exterior use

BRASS

- > Solid CZ121 Brass
- > Standard machined finish
- > Corrosion resistance rated fair to excellent
- > Please note a natural green/brown patination layer will form after long term exposure to the elements, the extent of this discolouration will be dependant on its location.
- > Interior & exterior use

FLAMED BRONZE

- > Solid Bronze
- > Hand finished Flamed Bronze unique to LightGraphix
- > Extremely durable with very high corrosion resistance
- > Please note a natural dark patination layer will form after long term exposure to the elements, the extent of this discolouration will be dependant on its location.
- > Interior & exterior use

PAINT FINISH

- > Matt Black, Matt White, and other RAL colours available
- > Not recommended for footlights in high traffic areas
- > Interior & exterior use

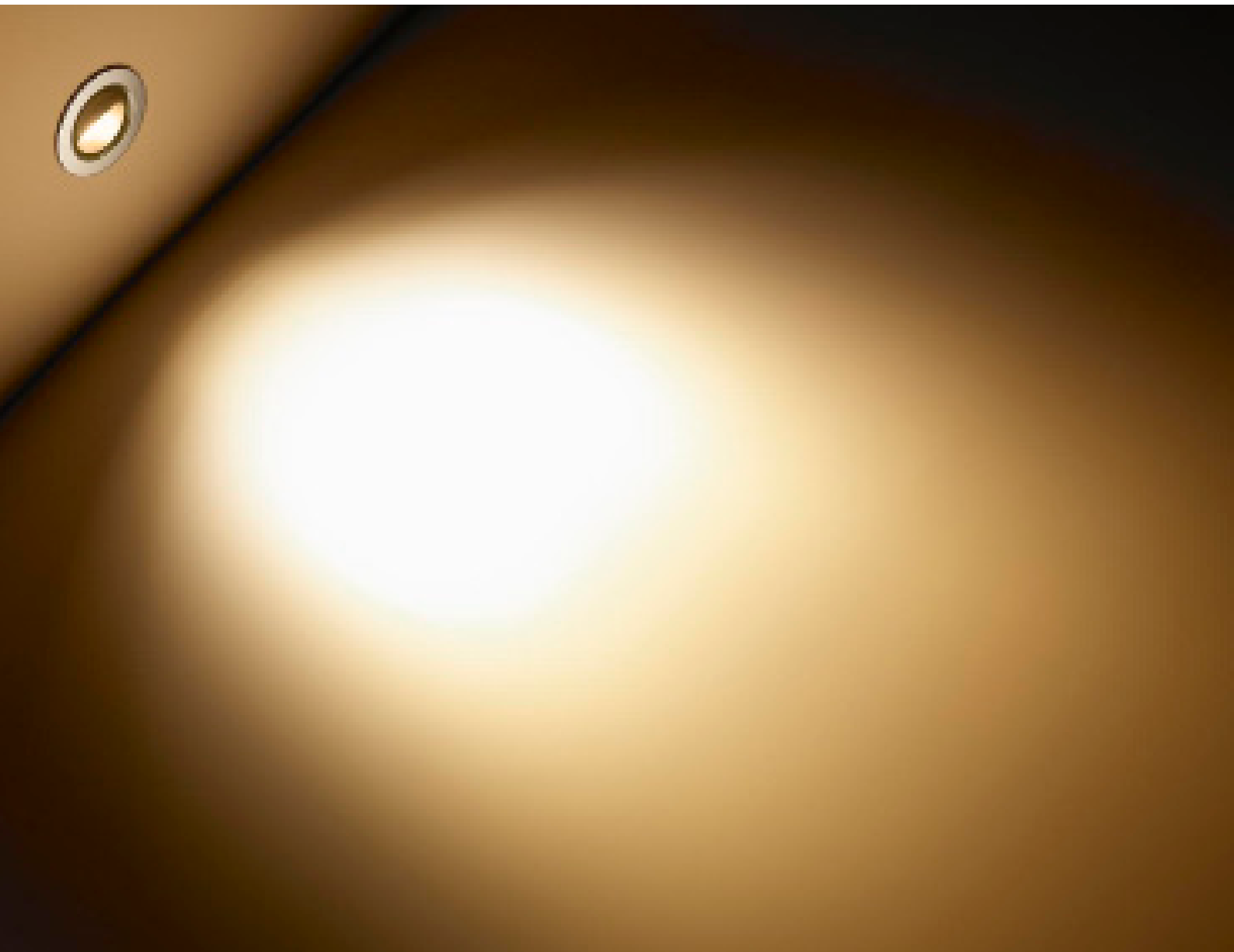
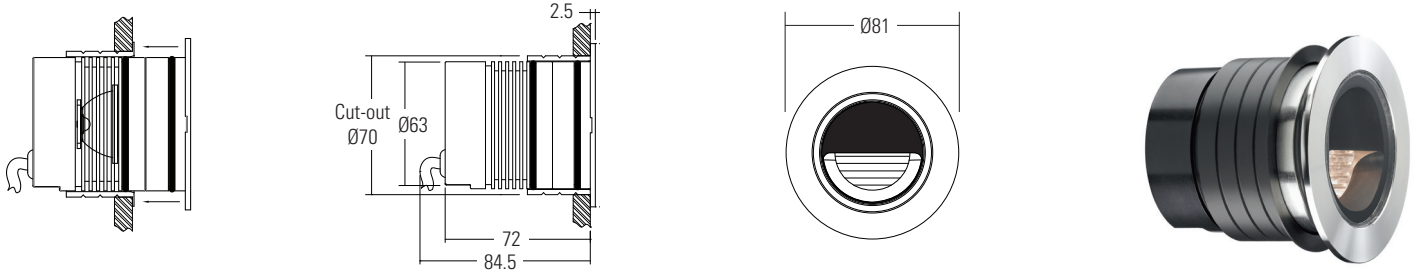


Design: Difusiona  
Project: Neslé, Barcelona, Spain  
Product: LD170

**DIMENSIONS AND FIXING ACCESSORIES**

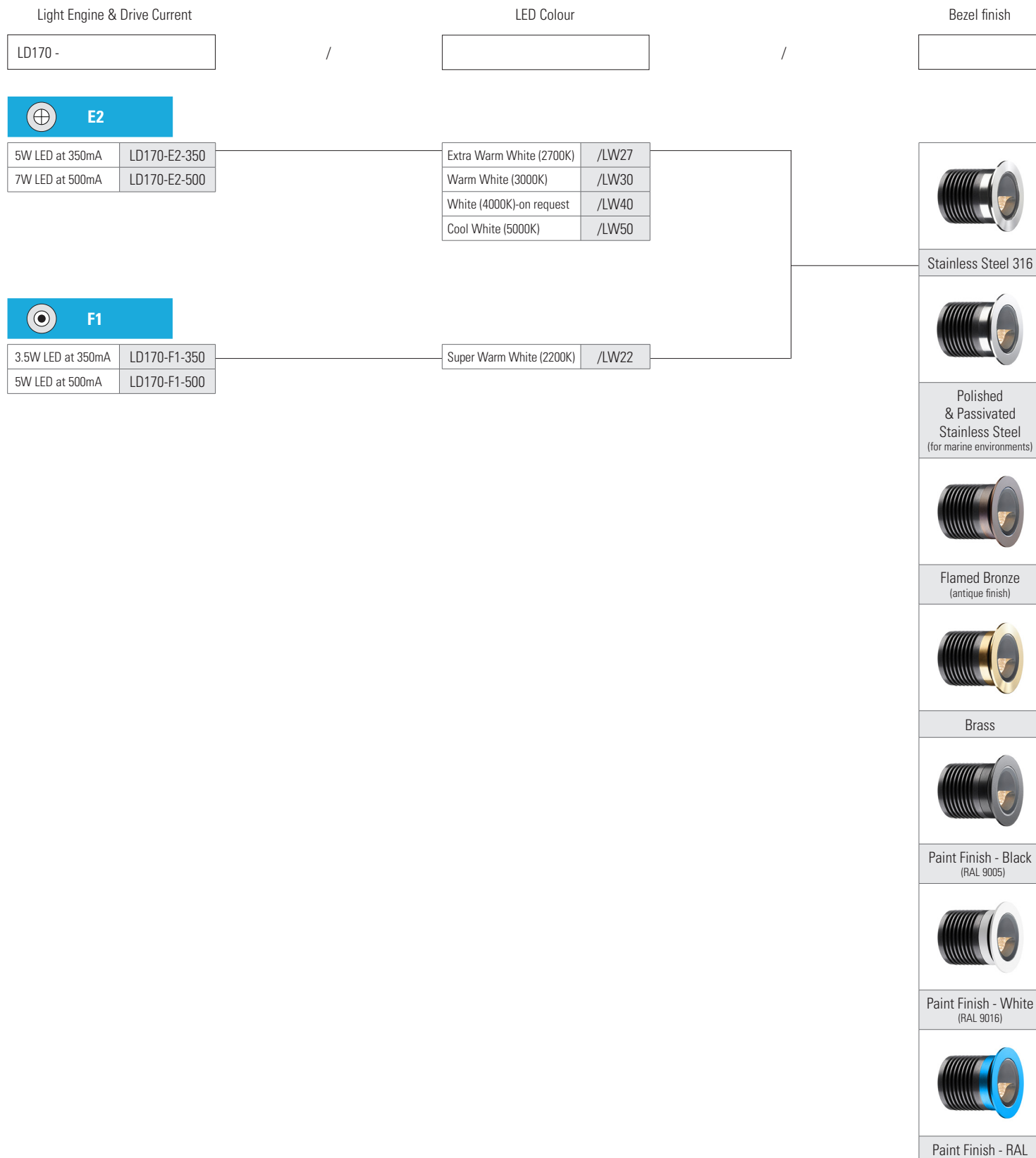
*Dimensions in mm*

The fitting should be specified with a /484S first fix sleeve; this is bonded into the mounting surface first. It is secured into the sleeve by two O-rings on the body. When pushed into the sleeve it creates a watertight seal.



ORDER CODES & OPTIONS

Example: LD170-E2-500 / LW30 / Stainless Steel



**Drivers**  
Use with 350mA, 500mA constant current LED drivers  
We have a range of dimmable LED drivers DMX and DALI compatible. Please see the downloads section on our website.